



*the cold press paper*  
*... excellence, as the river, flows...*

Volume 14, Issue 2

[www.stlws.org](http://www.stlws.org)

May 2010

## BIG SPLASH 2010

Saint Louis Watercolor Society is pleased to announce our exciting plans for this year's Big Splash, our 13th annual member awards exhibit, to be held at the St. Peter's Community & Arts Center, 1035 St. Peters-Howell Road, St. Peters, MO.

This is a members-only show and all entries will be accepted; however, work that has been accepted into any Creative Arts Gallery Show is not eligible for this show. Up to three paintings may be entered with an entry fee of \$7 per painting. See our website: [www.stlws.org](http://www.stlws.org) for complete list of Rules for Exhibitions and to download registration forms. Newcomers may join at receiving for the \$30 annual dues to apply through September 30, 2011.

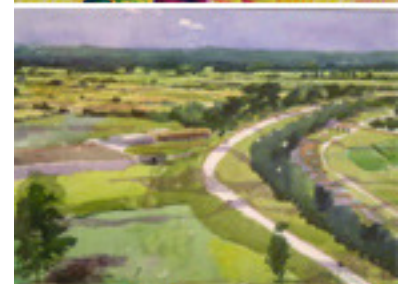
This year our chairperson for Big Splash is Kathleen Bromm. Call her at 636-825-6239 to volunteer your time. Receiving will be Tuesday, August 31, from 10 a.m. to 6 p.m., with the Opening Reception on Saturday, September 11th, from 1 to 3 p.m., and retrieval on Monday, October 25th, from 10 a.m. to 6 p.m. Also, remember that the exhibitors are asked to bring an hors d'oevre or dessert to share at the Opening Reception. Bring your friends and family to the opening for a wonderful afternoon of art and fellowship.

## SIGNATURE MEMBERS SHOW

We are excited to announce we are going to have a Signature Members Show at Art Trends Gallery in June. Signature Members are invited to participate with up to two entries per person, with a \$7 entry fee per painting. Our normal rules apply and all entries must be for sale. Receiving will be on Tuesday, June 1st, from 2 to 7 p.m., the Opening Reception with refreshments on Friday, June 4th, from 6 to 8 p.m., and retrieval on Thursday, July 1st, from 10 a.m. to 6 p.m.

Art Trends Gallery is located at 703 Long Road Crossing Drive #1, in Chesterfield (just one block west of Long Road on Chesterfield Airport Road). The gallery is handling the show publicity and press in the newspapers, and will handle all sales with a 40 percent commission. Invitation postcards will be available at receiving and an e-invite will be sent to those who have signed up in advance with Mary Mosblech. Please check out the gallery at their website: [www.arttrendsgallery.net](http://www.arttrendsgallery.net). We are proud to be holding our show at such a lovely gallery.

*Previous Big Splash Winners*



## RIVERBOAT PILOT HOUSE

Mirka Fette, President  
314-993-3135

Mary Mosblech  
Vice President, and  
Exhibits  
314-644-5043

Linda Hammelman,  
Treasurer  
314-849-4096

Jane Hogg, Secretary  
314-961-7626

Beverly Lake Hoffman,  
Graphics and Design  
314-822-3044

Shirley Kruse  
Workshops  
636-561-6263

Maggie McCarthy  
Programs  
636-724-5968

William Curtis  
Exhibits  
314-862-5113

Karl Zickler  
Workshops  
314-849-0209

Rosie Phillips  
Publicity & Awards  
314-968-5441

Doris Schwartz  
Hospitality  
314-631-6406

## COLD PRESS PAPER

Copyright © 2010  
By The Saint Louis  
Watercolor Society  
St. Louis, MO  
All rights reserved

[www.stlws.org](http://www.stlws.org)  
[http://  
stlws.blogspot.com](http://stlws.blogspot.com)

## SHOW & TELL

By Jane Hogg

At our January meeting members were invited to share paintings for "Show & Tell". As this was the change out date for C J Muggs, some brought their "Squares" theme paintings to share. It was a fun evening and we thank all those who participated.

**Bob McClellan** shared a portrait he did on Yupo which he finds less intimidating since you can easily wipe your paint off if you don't like something, and because it offers a juicy, unique quality.

**Carolyn Summer** shared "Look" which was a study of an autistic boy studying minnows in shallow water on 140 lb. Arches paper. She said she loves DaVinci Cobalt Violet because it granulates.

**Sandy Baker** shared a collage entitled "New Day" which she created with pieces torn from previous watercolor paintings and cheesecloth applied to 300 lb. watercolor paper and then painted. She said she just let it happen, after starting with a yellow sky.

**Jacquie Scharlott** shared a play of squares with nice negative spaces and a strong graphic composition entitled "Passion in the Night". The fence in the painting was her challenge because she is a loose painter.

**Linda Hammelman** shared a painting of a white rose with a black background, using a reference image from wetcanvas.com. Her challenge was how many colors does a white flower have.

**Dave Anderson** shared a painting of an old farm house he did from a photo he took in Maize Town, IL. His challenge was adding color to his composition since his photo was taken on an overcast day with the subject matter completely in shadow.

**Mirke Fette** shared a painting of three chickens with squares in the chickens' feathers and in the chicken wire background. Her challenge was to make the chicken in the front recede since it was not the focal point.

**Mary Mosblech** shared a painting of sunflowers that she did wet in wet, using negative painting and layering the background with Cobalt blue, then orange, then purple, and finally with indigo blue.

**Rosie Phillips** shared "Drops of Water", an abstract created using 5 pieces of torn paper applied to a piece of watercolor paper. The composition had a very interesting translucency creating tension.

**Anne Johnson** shared an abstract landscape entitled "The Spirit of the River". It was a quick paint she did near the Missouri River in a Pat Deadman workshop.

**Rodney Johnson** shared a painting entitled "Wholeness" which incorporated symbols used by Carol Jung in a mandala.

**Linda Meyer** shared a diptych entitled "Purple Paradise" of trees predominately painted in purple on watercolor paper prepped with gesso. She finds painting on gesso easier because you can make corrections. She also prefers not to mix her paints; she uses the colors as they come out of the tubes. You cannot use masking fluid on paper prepped with gesso.

**Mary Elsner** shared "Tea Squared", a painting of tea pots on squares with salt used to make designs on the pots.

**Maggie McCarthy** shared a landscape painting, entitled "Water Power", painted wet in wet from a value sketch and photo she took along the Youghiogheny River, down from Frank Lloyd Wright's "Falling Water" in Pennsylvania. Her challenge was capturing the energy of the rushing water, the essence of the scene, but making sure it told the truth.

**Barbara Martin Smith** shared a painting entitled "Baby Blocks" which was created using a quilt pattern and then playing with colors intuitively. The painting was done mostly with one layer but she did go over some areas.

**Mary Nienhaus** shared a still life painting of fruit with her hand holding a banana in the composition. Her challenge was trying to decide what to do with the background. She wanted energy to flow through the composition. She finally went to a fabric store and found an interesting print with fruit that she used for her background.

## JAZZ AND ABSTRACT IMPRESSIONISM

By Barbara Martin Smith



The evening began with music entitled "Portrait in Seven Shades," jazz at Lincoln Center orchestra/composed by Ted Nash. The piece tells a story about seven painters, not through words, as in a museum description, but through music. The seven painters the music reflects are Claude Monet, "Reflections of Clouds in Water Lilly Pond" 1930, Salvador Dali, "The Persistence of Memory" 1931, Henri Matisse, "Dance" 1909, Pablo Picasso, "Les Demoiselles D'Avignon" 1907, Vincent Van Gogh, "The Starry

Night" 1889, Marc Chagall, "Moi et le Village (I and the Village)" 1911, and Jackson Pollock, "One: Number 31" 1950.

Barbara tries to connect her work with the world of art. As a docent at the St. Louis Art Museum she likes having quotes from the great artists. She assembled slides from her years of teaching, entitled "The Slide Show Grid, Expressionism: Impressions, Improvisations, and Compositions", a presentation of student work inspired by Wassily Kandinsky to Juan Dubuffet. Along with the slide show, Barbara prepared a handout of some of the moving quotes by the famous artists featured in the show.

Barbara has found inspiration from the works of Wassily Kandinsky, a Russian painter and art theorist, who taught at the Bauhaus school of art and architecture. He is credited with painting the first modern abstract works. Kandinsky was afflicted with synesthesia; when he heard sound he saw color. In his happy years he wrote about his condition. Peggy Guggenheim collected his work before anyone else.

Barbara brought some of the books she has drawn on for inspiration. "Watercolors by Kandinsky" at the Guggenheim Museum; "Story of Painting" and "American Masterpieces" by Sister Wendy; "Action/Abstraction: Pollock, de Kooning, and American Art, 1940 - 1976" by Maurice Berger; "The Fables of La Fontaine" by Marc Chagall with his paintings in gouache.

Whenever we get stuck, Barbara suggested we play on acetate. Our art expresses who we are in our souls. Who we are and how we see and feel the world inspires real meaning in our art.

Thank you, Barbara, for a wonderful, inspiring, and educational evening. I think we were all so impressed with the artwork you selected for your slide show, by the famous artists and the students inspired by the masters.

## VOLUNTEER AT A SHOW

Help at one of our shows with receiving, hanging, or retrieving and you will receive a coupon entitling you to one free entry at any of our shows (\$7 value). Plus, it is a fun way to see all of the entries and meet your fellow artists. Getting involved is rewarding!

## LOOK WHO'S JOINED THE CREW

### Beth Gyax

313 Oak Tree Drive  
Webster Groves, MO  
63119  
314-918-7103  
gygaxwatercolors  
@yahoo.com

### Kathy Dowd

247 Spencer Rd.  
Webster Groves, MO  
63119  
314-968-2417  
kcdowd@aol.com

### Carole Schulte

9006 Lackland Rd.  
Overland, MO 63114  
314-602-0688  
carolita55@yahoo.com

### Deborah Raboin

420 North Penn St.  
O'Fallon, IL 62269  
618-558-3447  
draboin@oths.k12.il.us

### Debra Couchman

1549 Paradise Valley Dr.  
High Ridge, MO 63049  
636-677-3094  
turtlehopper  
@charter.net

*Continued on page 4*

*New Members  
continued*

**Kay Sutherland**

1713 Wilmar Dr.  
Quincy, IL 62301  
217-222-6041  
ksuther@comcast.net

**Anna Stupavsky**

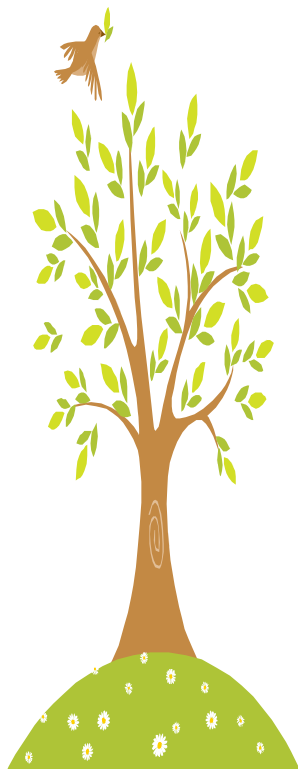
4121 So. 46th St.  
Quincy, IL 62305  
217-223-7990  
annems39@yahoo.com

**Carolyn Sommer**

5769 North Lake Road  
Springfield, IL 62711  
217-529-1072  
coartchick@aol.com

**Gene Tutoky**

3503 Bluff Court  
Godfrey, IL 62035  
618-466-6138  
gtutoky  
@craneagency.com



## Why Paint a Series?

By Nancy Muschany



Painting in a series allows you to ask the question “I wonder what would happen if ...?” You can more fully explore your subject by applying different treatments and approaches to the same subject. Working in a series forces you to think and feel. Often you will come up with ideas you might never have thought of when painting only what you see. What do you have to lose? Along this journey you might discover a whole “new you.”

Nancy began the evening showcasing self portraits by her students at Meramec this semester produced using different applications incorporating many different materials. The variety of creative expression was amazing.

Nancy said she started watercolor painting with an exploration of shells that lasted a year and a half. Accidentally she painted a series. Next she painted succulents for six months. After that she started painting everything and felt like she lost some of her creativity due to her loss of focus. When Nancy heard Margaret Keller, a faculty member of the St. Louis Community College - Meramec Art Department, talk about painting a series and saw her examples done of a garden, from eye level, from a high vantage point, and then from a sky view hovering over the garden just capturing the patterns, she realized how doing a series can unleash creativity. Making a list of 100 things you can do with a subject can really invite exploration.

Nancy started painting tropical themes after that, but found they were not very saleable here so she switched to St. Louis scenes using local color. When she started incorporating her love of tropical colors and foliage into her St. Louis scenes they came alive and became unique.

After taking a Skip Lawrence workshop, Nancy learned how injecting pattern and changing colors can transform a subject. Skip Lawrence said, “For a painter there is no such thing as a bad idea; the only mistake is not having any ideas.”

Myrna Wacknov’s webstie gave Nancy the idea of using a stick and ink on newspaper as a technique that frees you to try things. Visit her blog, [www.myrnawacknov.blogspot.com](http://www.myrnawacknov.blogspot.com), or sign up to her daily challenge: [noreply+feedproxy@google.com](mailto:noreply+feedproxy@google.com) on behalf of Creativity Journey.

Nancy shared a series she did of a landscape using local color, reversed colors on the Munsell Color Wheel, black and white with one area of local color, intensity painting using dirty colors with one local color, and neutrals with one pure color. You can take one scene and create many different feelings by changing the color schemes. Playing with variations of a theme gives you ideas and freedom. You can use scraps of paper to play with ideas for painting backgrounds. Also try different styles of painting to vary themes such as painting flat objects, gesturing, dirty colors and thick paint scrubbed on the paper, and small studies with scraps of paper to play with graphic elements added to the compositions.

To recap, try the following ideas to free yourself up and expand your creativity: change color – pure color, intensity, neutrals; change space – shallow, deep, flat; change shapes – rounded, angular; change techniques – careful rendering, casual, painterly, gestural; change mediums – transparent, gouache, crayons; add new elements – stamping, collage, texture, patterns; change format – long vertical paintings or thin horizontal paintings.

We thank Nancy for a delightful evening with wonderful ideas to stimulate our creativity and further our journey of exploration.

## AROUND OUR TOWN KUDOS

**Mary Mosblech** will be exhibiting her work at Fleishman Hillard, 200 N. Broadway, January 22 to March 29, 2010. This is an Art St Louis Off-Site Exhibit.

**Muriel Eulich** has three pieces in the Ann Metzger Memorial National All Media Exhibit at the Artists Guild, January 24 to March 19, 2010. Callie Sears is her muse and model for this series along with the Maillol sculpture at the Chase Park Plaza Hotel in St. Louis. Another piece was accepted in the Southern Watercolor Society 33rd Annual Exhibition juried by Cheng\_Khee Chee to be held in Kentucky in March.

Members **Elizabeth Concannon** and **Barbara McCormack** were showcased in the *Award Winner's Show* at Norton's Fine Art & Framing Gallery, Feb. 5<sup>th</sup> thru 27<sup>th</sup>. They were among the top 6 artists in Norton's 2009 Holiday Show.

Congratulations to **Jeanne Thomas** for winning the "2009 People's Choice Award" in our Something Small for the Holidays Show At Norton's Fine Art & Framing

**Judy Brown** is had a one woman show of her artwork at Chapel House , 4560 Washington Street in Florissant, in March, 2010.

**Miriam Krone** was part of a multi-media show held the month of March at The Framin' Place in Chesterfield, featuring 9 artists from the Mid-Missouri Fine Arts Society who did a painting a day for the month of February. Miriam may have been the only one who worked in watercolor (on Aquabond). Her theme was "Pet Personalities." All pieces were 6" x 6".

**Maggie McCarthy's** painting "Water Power" was selected by Artist/Juror Judi Betts for inclusion in the Red River Watercolor Society's 17th Annual National Juried Watermedia Exhibition., running from April 6, 2010 - June 19, 2010, at the Hjemkomst, Historical & Cultural Society of Clay County, Moorhead, Minnesota. Maggie was also a featured artist at Gateway Gallery in Clayton through April 2.

---

## IMAGE SIZE USING PHOTOSHOP OR PHOTOSHOP ELEMENTS

By Mary Mosblech

**Hard copy:** (print photographs) Before you print, you need to specify the image size (such as 4x6) and output resolution (dpi=dots per inch).

On the top bar, click on Image and scroll down to Resize. – Image Size. Change the document to the size you want to print. Then click OK. The recommended dpi for art book quality prints is 175 to 300. Be sure to print your photos on photographic paper that are made for your printer.

JPEGs to enter **Art Shows:** Most digital jury images can be submitted as JPEGs using the 1920 pixel square format. You must use an image that has at least one side larger than 1920 pixels. Save your original image in RAW/TIFF format or Photoshop format.

Go to File and Open your image. Go to Image – Image Size: Make sure you are looking at your image size in pixels. Make sure that Constrain Proportions is checked. Take the longest size and size it down to 1920 pixels. (The shorter side will shrink in proportion). Go to Color Picker. Make sure the background color is black.

Go to Image – Resize – Canvas Size. Change the shorter side to 1920 also. Click OK. The dpi should be 72. The color should be RGB. File format should be baseline JPEG (do not use progressive JPEG format). File size should be less than 1.8 MG.

**For Websites:** the best size is 500 pixels on the smallest side, at 72 dpi.

## SHOW YOUR ARTWORK:

**CJ Mugg's** is a themed exhibition, changed quarterly, no entry fee or commission. There is space for about 30 paintings which are allotted based on sign up at meetings. Call Barbara Martin Smith 314-961-6047 if you wish to participate but cannot attend the meetings. Receiving is on the third Tues. from 9-10 PM and the third Wed. from 9-10 AM.. Upcoming themes are: Jul. 2010, *Red Hot* (paintings to include color red), Oct. 2010, *Wordplay* (printed words in paintings).

**The Showboat**, at the Foundry Art Centre in St. Charles, is a rented space, 40" x 60", two months for \$20. Paintings are matted, not framed, and are sold by the Foundry personnel. There is a 35% commission. Call Linda Green/Metzler, 314-469-3205, to reserve your space.

**The Pilot House** at First Bank Des Peres is open to anyone who has volunteered in any way. Four artists are featured, each taking a wall with their name prominently exhibited. Full or 1/2 sheet size is recommended. The artwork changes on the third Wednesday of January, April, July and October with receiving times from 10—noon. To sign up for a show, call Mary Mosblech 314-644-5043.

## DRIPS AND DRABS

### Deadline for the next issue is July 5, 2010.

Please send your articles, kudos, and ads to Jane Hogg, 554 Sheffield Ave. St. Louis, MO 63119

### Check out the Regional Arts Commission website for helpful information: [www.art-stl.com](http://www.art-stl.com)

with links to Arts Zipper Calendar, Marketing Toolbox, News Room and more.

### PLEIN AIR PAINTERS

#### *Don Wiegand Studio*

We have been invited to paint plein air at Don's studio grounds, located at One Wiegand Drive, in Chesterfield, on June 5, 8:30 a.m. to 5 p.m. RSVP to Linda Green Metzler, who is hosting this event, at: [lgmetzler@charter.net](mailto:lgmetzler@charter.net)

**Hog Hollow** paint out is coming again this Fall. Watch for details.

To place an advertisement in **The Cold Press Paper**, contact Jane Hogg, 314-961-7626

- 5" X 6"     \$75
- 5" X 3"     \$45
- 2½" X 3     \$25
- 1½" X 1½" \$15

Copyright ©2010 by The Saint Louis Watercolor Society. The publishers reserve the right to limit the number, size, and content of advertising.

**Call to instructors.** To all SLWS members who teach watercolor, we will be glad to announce your class or workshop in the newsletter and on our blog. Please email Jane Hogg, [jhhx2@sbcglobal.net](mailto:jhhx2@sbcglobal.net) or Linda Hammelman, [Hammelman@aol.com](mailto:Hammelman@aol.com), with your information. Persons or organizations outside of SLWS may purchase advertising space in the newsletter to announce their classes or workshops.

## CLASSES AND WORKSHOPS

The **2010 SLWS sponsored workshops:** **Tom Francesconi** (wait list only), Jun. 14-18; and **Mark Mehaffey** (wait list only), Sept. 24-26.

**Shirley Nachtrieb's 2010 Workshops**, held at the St. Peters Community & Arts Center, from 9:30 a.m. to 3:30 p.m.: May 17 & 18, Collage & Design Workshop  
Call Shirley at 636-947-1936 for more information or visit [snachtrieb@charter.net](mailto:snachtrieb@charter.net).

**Judy Seyfert Workshop**, held at the Maria Center, 336 E. Rippa, St. Louis, MO, in June on two consecutive Wednesdays (June 2 & 9) from 9 a.m. to 3 p.m. on advanced watercolor portrait class. Students need basic watercolor experience. The class will be limited to 15 students. Registration is through Judy. Please contact her at [judyseyfert.art@gmail.com](mailto:judyseyfert.art@gmail.com).

## CALL FOR ARTISTS

We all know and love the **St. Peter's Community & Arts Center** for hosting our Big Splash competition for the past 11 years. We are invited to take part in their upcoming **Small Wonders and Large Ideas** Painting/Drawing, Mixed Media, Photography Art Show/Competition, **May 22 - July 12**. Receiving: Tuesday, May 18, 9am - 8:30pm; Reception: Saturday, May 22, 1pm - 3pm. All works must be considered small or large. A complete list of rules and entry information for this art show may be picked up at the St. Peters Community & Arts Center, or may be requested by calling the Center at 636.397.6903, or by visiting [www.stpetersmo.net](http://www.stpetersmo.net) and downloading the information

## DANA BROWN SHAW NATURE CENTER RETREAT

How to spend a perfect day - a fabulous breakfast with fabulous artist friends, conversation and a good laugh - then pick up your sketch book, pencils, paints, camera, and head outdoors to enjoy the fresh air, quiet, nature undisturbed - or if you choose, settle in at your work table inside the assembly building to paint. Undecided, enjoy a rocking chair on the covered porch. Don't forget to head in for lunch. Again, something delicious, and again following lunch do your own thing inside or outdoors, you need only be interrupted for dinner. Spend the evening painting, drawing, chatting or watching an artist video while enjoying the fire in the huge fireplace. Not only are your companions great artists, they are also great cooks. No one wanted to leave for home last year, a testimony to having enjoyed the Nature Center Retreat.

### REGISTRATION FOR SLWS FALL RETREAT OCT. 4-6, 2010

Name \_\_\_\_\_  
 Address \_\_\_\_\_  
 City/State/Zip \_\_\_\_\_  
 E-mail \_\_\_\_\_ Phone \_\_\_\_\_

Enclosed is my check for \$40 (deposit to hold reservation) payable to the Saint Louis Watercolor Society. Final fee will be between \$40 & \$80 (cost will be divided by the number of participants). On the back of this form are my food allergies/special needs or considerations.

Please mail registration form and payment to:  
 Doris Schwartz, 9438 Koerber Lane, St. Louis, MO 63123

Membership Invitation

We invite you to join us as a member of the Saint Louis Watercolor Society. Dues are \$30 for the calendar year October through September. You may join at any time but dues are not prorated. Please complete this form and return it with a check in the amount of \$30.00, made payable to **Saint Louis Watercolor Society**, PO Box 158, Fenton MO 63026.

Name to appear in directory: \_\_\_\_\_

Address: \_\_\_\_\_

City: \_\_\_\_\_ State: \_\_\_\_\_ Zip: \_\_\_\_\_

Phone (include area code) \_\_\_\_\_

E-mail address: \_\_\_\_\_

Web site: \_\_\_\_\_

Interested in teaching watercolor classes? Yes \_\_\_ No \_\_\_

Please indicate your preferences for **Volunteer Work**

- |           |             |            |             |           |
|-----------|-------------|------------|-------------|-----------|
| Exhibits  | Calligraphy | Newsletter | Hospitality | Publicity |
| Workshops |             | Programs   | SLWS Board  |           |

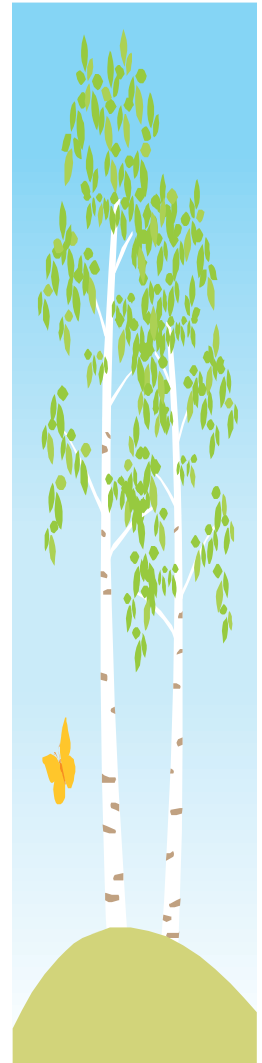


# Eb and Flo

by Bill Heuer



No, Eb. Toulouse Lautrec would NOT be considered a Wildlife artist.





PO Box 158  
Fenton, MO 63026



## DATES & TIMES 2010

Meetings are held at the First Congregational Church of Webster Groves on the corner of Lockwood and Elm from 7:00 to 9:00 PM on the 3rd Tuesday of the month from September thru May (except Dec).

In case of inclement weather conditions, please listen to KMOX and check your email for cancellations of any meetings or activities.

**May 18, 7 PM**, membership meeting, election of directors, guest artist, Judy Seyfert.

**Jun. 1, 10-5**, retrieval for SLWS 11th Annual Juried Exhibition.

**Jun. 1, 2-7 p.m.**, Signature Members Show receiving at Art Trends Gallery.

**Jun. 4, 6-8 p.m.**, Signature Members Show Opening Reception at Art Trends Gallery.

**Jun. 14-18**, Tom Francesconi workshop at the Maria Center.

**Jul. 1, 10 a.m.-6 p.m.**, Signature Members Show retrieval at Art Trends Gallery.

**Jul. 20, 9-10 p.m. and Jul. 21, 9-10 a.m.**, receiving for Red Hot (painting should include the color red) at CJ Muggs.

**Jul. 21, 10-noon**, Pilot House exhibit change.

**Aug. 31, 10 a.m.- 6 p.m.**, Big Splash 2010 receiving at St. Peters Community Arts Center.

**Sept. 11, 1-3 p.m.**, Big Splash Opening Reception (exhibitors bring a food treat), St. Peters Community Arts Center.

**Sept. 21, 7 p.m.**, membership meeting, guest to be announced.

**Sept. 24-26**, Mark Mehaffey workshop at Maria Center.

**Oct. 6-8**, SLWS Fall Retreat at Shaw Nature Reserve. Arrival Mon. Oct. 4, 2-4 p.m.; departure Wed. Oct. 6, before 2 p.m.

**Oct. 19, 7 p.m.**, membership meeting, guest to be announced.

**Oct. 19, 9-10 p.m. and Oct. 20, 9-10 a.m.**, receiving for Wordplay (printed words incorporated in painting) at CJ Muggs.

**Oct. 20, 10-noon**, Pilot House exhibition change

**Oct. 25, 10 a.m.-6 p.m.**, Big Splash 2010 retrieval, St. Peters Community Arts Center.